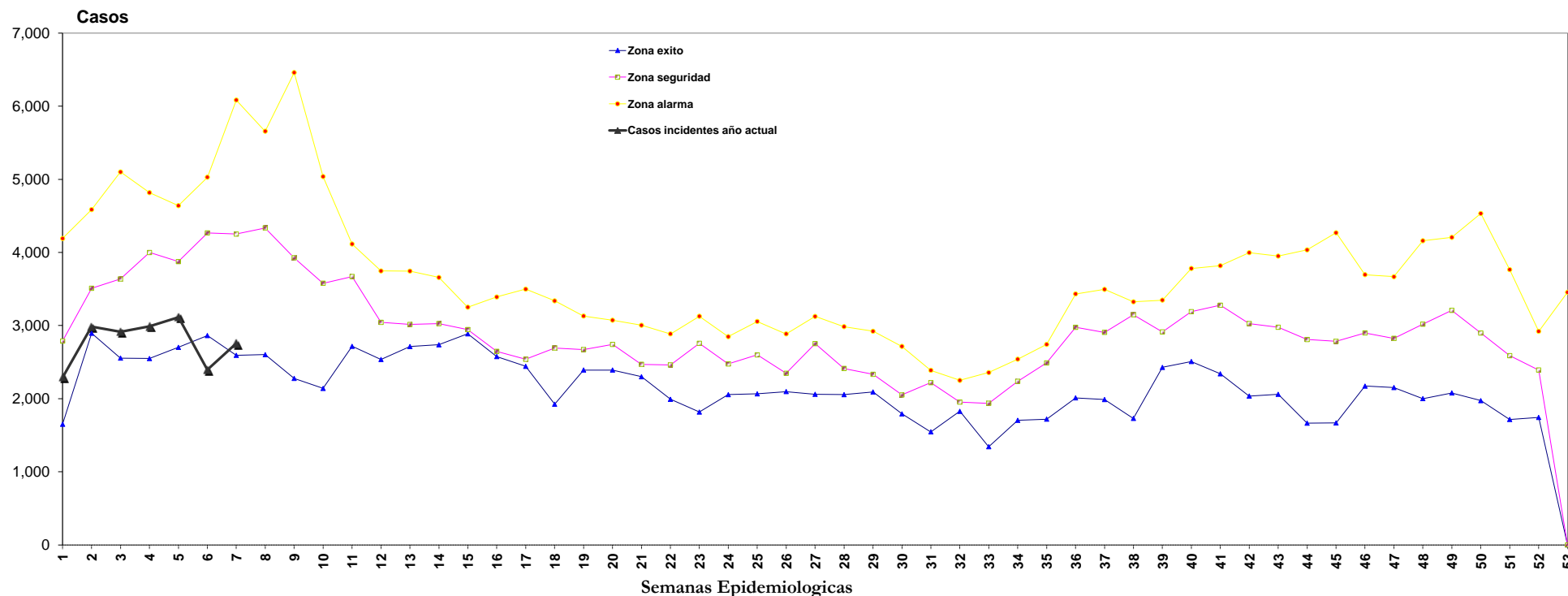


CANAL ENDEMICO JURISDICCION SANITARIA No. III DE CUAUTLA DE: IRAS 2020

Semanas Epidemiológicas

Semanas Epidemiológicas																																																						
AÑOS	1	2	3	4	5	6	7	8	9	10	11	12	13	14	15	16	17	18	19	20	21	22	23	24	25	26	27	28	29	30	31	32	33	34	35	36	37	38	39	40	41	42	43	44	45	46	47	48	49	50	51	52	53	
2013	3,068	3,913	4,590	4,287	4,295	4,672	4,299	4,819	4,311	4,528	3,988	3,747	2,713	3,026	2,905	3,206	3,029	3,030	3,130	3,073	2,469	2,462	2,773	2,805	3,056	2,886	3,125	2,985	2,922	2,715	2,388	2,250	2,357	2,360	2,709	3,433	3,495	3,148	3,348	3,781	3,818	3,944	3,282	2,996	3,175	3,147	2,978	3,019	3,597	3,194	2,588	2,321	0	
2014	2,404	3,510	3,457	3,999	3,875	4,267	4,251	4,517	3,927	3,565	3,671	3,365	3,078	3,165	3,220	2,579	2,539	2,367	2,675	2,958	3,004	2,669	3,127	2,475	2,599	2,097	2,932	2,905	2,501	2,350	2,219	2,206	2,135	2,087	2,489	2,976	3,241	3,269	3,246	3,338	3,780	3,997	3,950	4,035	4,269	3,696	3,668	4,160	4,206	4,533	3,765	2,921	3,455	
2015	4,191	4,586	5,101	4,818	4,640	5,029	4,785	4,336	4,300	3,579	3,265	3,044	2,756	2,737	2,887	2,623	2,501	2,693	2,671	2,392	2,445	2,462	2,757	2,614	2,404	2,347	2,488	2,369	2,136	2,041	2,225	1,950	1,937	1,973	2,398	3,071	2,907	3,325	3,304	3,624	3,306	3,127	2,919	2,809	3,121	3,024	3,409	3,591	3,910	3,323	2,771	2,715	0	
2016	2,788	3,104	3,637	3,284	4,390	4,628	6,084	5,658	6,460	5,038	3,752	2,536	3,015	3,119	3,251	3,391	3,498	3,338	2,813	2,943	2,698	2,733	2,767	2,848	2,674	2,860	2,920	2,617	2,495	1,792	2,307	2,175	1,889	2,299	2,742	2,973	2,915	3,208	2,913	3,190	3,278	3,027	2,988	2,510	2,751	2,809	2,825	3,151	3,208	2,898	2,657	2,712	0	
2017	2,632	3,054	2,784	3,237	3,222	3,087	3,371	3,749	3,883	3,825	4,115	3,608	3,745	3,658	2,900	2,976	2,714	2,347	2,531	2,685	2,470	2,279	2,572	2,433	2,704	2,180	2,451	2,055	2,092	2,051	1,837	1,827	1,979	2,237	2,674	3,133	1,988	1,730	2,528	2,798	2,340	2,153	2,060	1,665	1,668	2,362	2,152	2,407	2,286	2,369	1,716	1,743	0	
2018	2,915	3,771	4,211	4,722	3,782	3,466	3,412	3,743	3,367	3,279	3,018	2,837	2,753	2,873	3,051	2,647	2,442	2,725	2,392	2,742	2,861	2,886	2,553	2,238	2,066	2,644	2,753	2,413	2,333	2,065	1,825	1,938	1,661	1,704	1,950	2,788	2,518	2,714	2,893	3,043	2,766	2,036	2,301	1,828	2,184	2,172	2,314	2,387	2,078	2,201	2,114	2,012	0	
2019	1,650	2,895	2,555	2,549	2,702	2,863	2,593	2,602	2,277	2,140	2,716	2,790	3,147	2,985	2,945	2,576	2,499	1,924	2,490	2,559	2,300	1,991	1,817	2,055	2,214	2,284	2,060	2,321	2,292	1,882	1,546	1,953	1,343	2,540	1,720	2,011	1,997	2,171	2,428	2,508	2,421	2,886	2,977	2,866	2,784	2,899	2,361	2,001	2,188	1,073	2,538	2,392	0	
TOTAL	19,648	24,833	26,335	26,896	26,906	28,012	28,795	29,424	28,525	25,954	24,525	21,927	21,207	21,563	21,159	19,998	19,222	18,424	18,702	19,352	18,247	17,482	18,366	17,468	17,717	17,298	18,729	17,665	16,771	14,896	14,347	14,299	13,301	15,200	16,682	20,385	19,061	19,565	20,660	22,282	21,709	21,170	20,477	18,709	19,952	20,109	19,707	20,716	21,473	20,491	18,149	16,816	3,455	
Q1	1,650	2,895	2,555	2,549	2,702	2,863	2,593	2,602	2,277	2,140	2,716	2,536	2,713	2,737	2,887	2,576	2,442	1,924	2,392	2,392	2,300	1,991	1,817	2,055	2,066	2,097	2,060	2,055	2,092	1,792	1,546	1,827	1,343	1,704	1,720	2,011	1,988	1,730	2,428	2,508	2,340	2,036	2,060	1,665	1,668	2,172	2,152	2,001	2,078	1,073	1,716	1,743	0	
Ma	2,788	3,510	3,637	3,999	3,875	4,267	4,251	4,336	3,927	3,579	3,671	3,044	3,015	3,026	2,945	2,647	2,539	2,693	2,671	2,742	2,470	2,462	2,757	2,475	2,599	2,347	2,753	2,413	2,333	2,051	2,219	1,953	1,937	2,237	2,489	2,976	2,907	3,148	2,913	3,190	3,278	3,027	2,977	2,809	2,784	2,899	2,825	3,019	3,208	2,898	2,588	2,392	0	
Q3	4,191	4,586	5,101	4,818	4,640	5,029	4,785	4,336	4,300	3,579	3,671	3,747	3,745	3,658	3,251	3,391	3,498	3,338	3,130	3,073	3,004	2,886	3,127	2,848	3,056	2,886	3,125	2,985	2,922	2,715	2,388	2,250	2,357	2,540	2,742	3,433	3,495	3,325	3,348	3,781	3,818	3,997	3,950	4,035	4,269	3,696	3,668	4,160	4,206	4,533	3,765	2,921	3,455	
2020	2,291	2,985	2,916	2,988	3,115	2,396	2,754																																															

Canal Endémico Jurisdicción Sanitaria No. III de Cuautla de: Iras



FUENTE: SUIVE-1-2005; SUIVE-1-2007

PROCESO DE INFORMACION: DEPARTAMENTO DE EPIDEMIOLOGIA



TOTAL
170,155
171,689
161,736
164,556
135,062
138,387
123,176
1,064,761
123,176
161,736
171,689
19,445

